



Hadley Park

4001, 4041, 4081 Hadley Road
South Plainfield, New Jersey

PROPERTY FEATURES

- Divisible office space available
- Space is well designed for today's social distancing work environment.
- Separate private entrances to suites with minimal interactions with other tenants
- Some suites feature private restrooms
- No communal lobbies or elevators
- Separate individually metered HVAC systems
- Easy Access off I-287
- Close to Restaurants, Hotels, Shops, Banking and Fitness Center

Suites Available Immediately

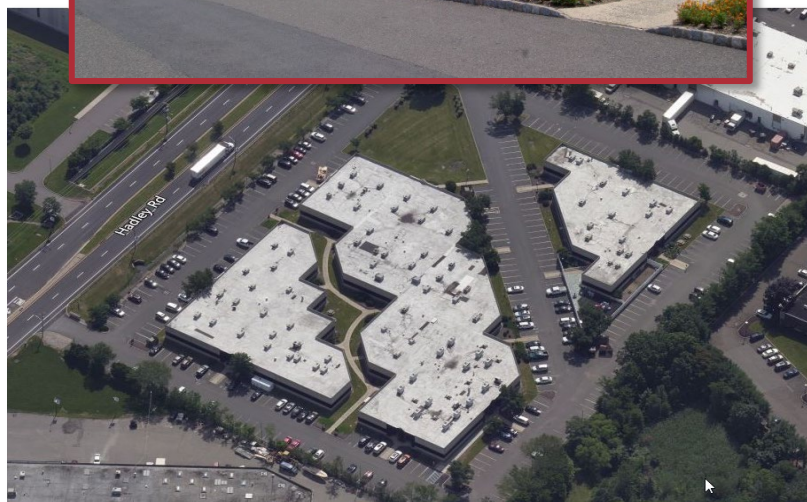
4001	2,356	RSF*	
	2,650	RSF*	
	6,397	RSF*	
	11,403	RSF	
4041	3,195	RSF*	
	11,104	RSF* (Divisible)	
	2,148	RSF*	
	16,447	RSF (Total)	
4081	10,200	RSF	

* Spaces can be combined.
Floorplans available upon request



ABOUT THE LOCATION

- Located at the intersection of Stelton Road and Centennial Avenue in Piscataway
- Between two exits of I-287 -- Exit #4 (Durham Road) and Exit #5 (Stelton Road)
- Surrounded by shopping centers, restaurants, banks, hotels and public transportation
- Near New Jersey Turnpike, Garden State Parkway, US Routes 1 & 9, Routes 27, 28 and 440
- 20 minutes to Newark International Airport



1315 Stelton Road
Piscataway, NJ 08854
732 985 3000 | naidb.com

For Further Information, Contact Exclusive Broker:

MARC SHEIN
Senior Vice President

732 839 3331 | mshein@naidb.com