



110 Woodfern Road

Branchburg, New Jersey

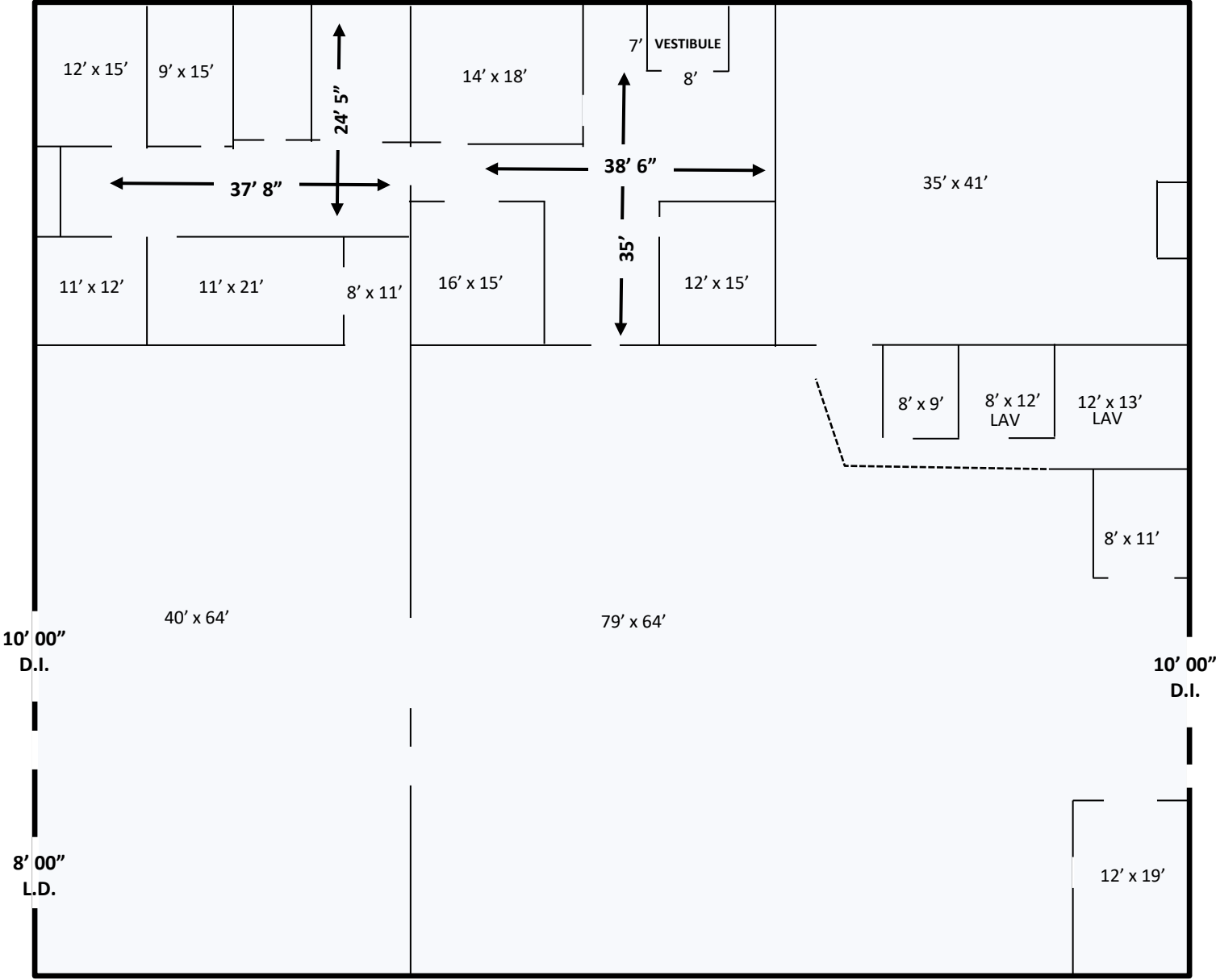
Property Features

- ±12,100 sq. ft. well maintained industrial/flex building for sale
- Fully air-conditioned and features 1,500 sq. ft. newly renovated clean lab space
- 2 drive in doors and 1 exterior loading dock
- 12 ft. ceiling height
- Situated on .27 acres with ample parking
- Strategically located minutes from Route 202 and 206, providing convenient access to Route 22, and I-78 and I-287
- **Call For Sale Price Information**



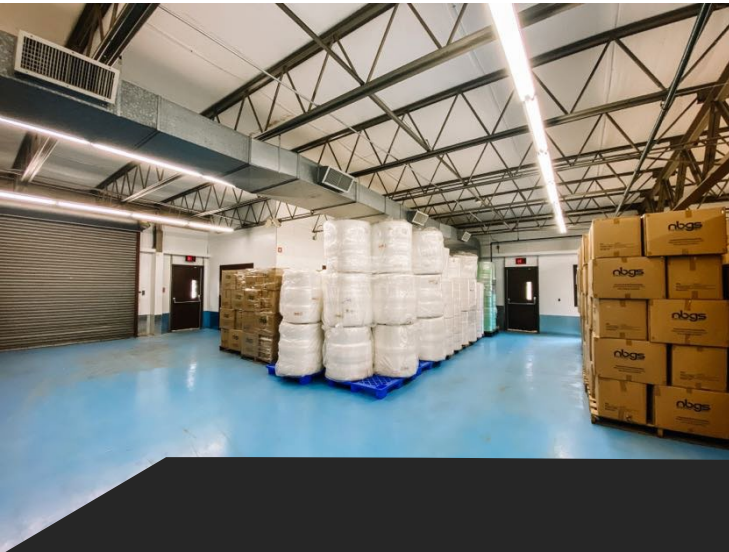
For further information
please contact Exclusive Broker:

Current Floor Plan



Not drawn to scale

Building Photos



For Sale
±12,100 Sq. Ft. Flex Building



NAI DiLeo-Bram & Co.

Commercial Real Estate Services, Worldwide.

For further information
please contact Exclusive Broker:

1315 Stelton Road
Piscataway, NJ 08854
732 985 3000
naidb.com

Matthew DiLeo
Associate
732 985 3000 ext. 230
mdileo@naidb.com

Robert V. DiLeo
Associate
732 985 3000 ext. 207
rvdileo@naidb.com

Kyle Gerace
Associate
732 985 3000 ext. 229
kgerace@naidb.com

The information contained herein has been given to us by the owner of the property or other sources we deem reliable. We have no reason to doubt its accuracy, but we do not guarantee it.
All information should be verified prior to purchase or lease.