

For Sale
±5.1 Acres



480-486 Metlars Lane

Piscataway, New Jersey

Property Features

- ±5.1 acres of land for sale
- Zoned R-20
- Utilities to site
- Well situated in dense residential area adjacent to Rutgers University and close to area schools, neighborhood recreation and local shopping centers
- Offering easy access to Route 18 and Route 287
- Strong area demographics
- Call for sale price information

Area Demographics



1 Mile	9,504	2,033	\$134,855
3 Miles	126,203	40,347	\$113,311
5 Miles	306,824	101,282	\$113,931

For further information
please contact Exclusive Broker:

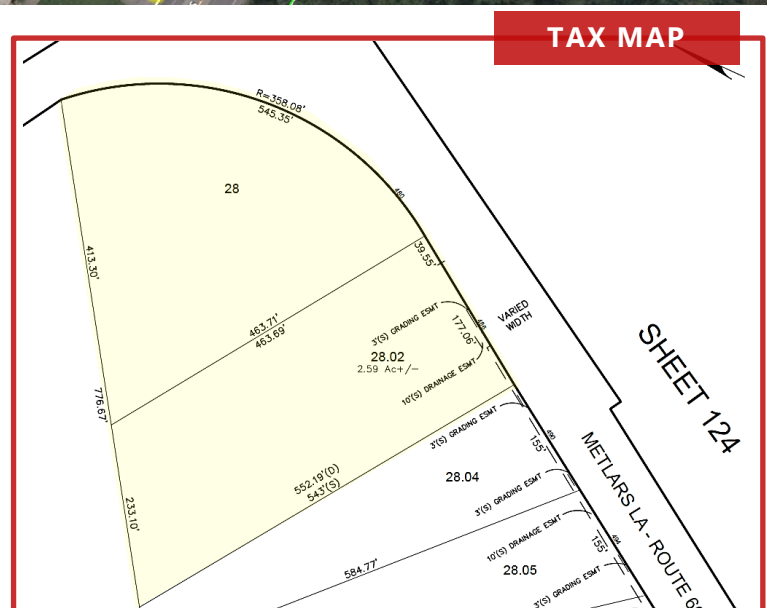
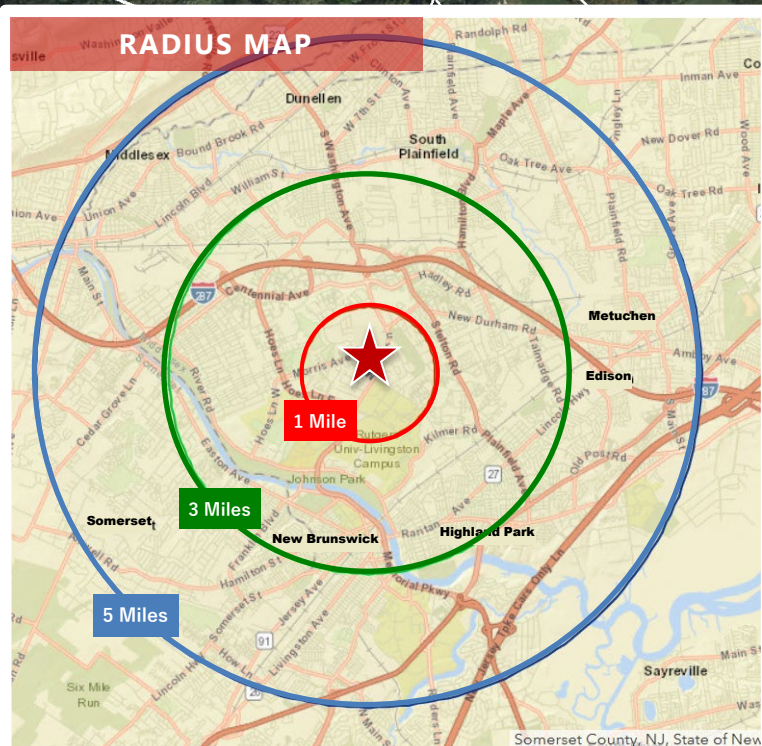
1315 Stelton Road
Piscataway, NJ 08854
732 985 3000 | naidb.com

Marc Shein
Senior Vice President
732 985 3000 ext. 212
mshein@naidb.com

Kyle Gerace
Associate
732 985 3000 ext. 229
kgerace@naidb.com

For Sale

±5.1 Acres



NA DiLeo-Bram & Co.

Commercial Real Estate Services, Worldwide.

1315 Stelton Road
Piscataway, NJ 08854
732 985 3000 | naidb.com

For further information
please contact Exclusive Broker:

Marc Shein
Senior Vice President
 732 985 3000 ext. 212
mshein@naidb.com

Kyle Gerace
Associate
3000 ext. 229
e@naidb.com

The information contained herein has been given to us by the owner of the property or other sources we deem reliable. We have no reason to doubt its accuracy, but we do not guarantee it. All information should be verified prior to purchase or lease.