

2057 Millburn Avenue

Union, New Jersey

Property Highlights

- 3,000 sf warehouse
- 0.21 Acre Lot
- Additional Entrance to Side St.
- Zoned: RB (2-Family Residential)
- Redevelopment Opportunity
- 0.75 Miles to Maplewood Train
- 1.5 Miles to Millburn Train
- 1 Block to Downtown Maplewood
- 0.5 Miles to Rt. 78, Exit 50 A/B
- Sale Price: \$399,000



1315 Stelton Road
Piscataway, NJ 08854
732 985 3000
naidb.com

The information contained herein has been given to us by the owner of the property or other sources we deem reliable. We have no reason to doubt its accuracy, but we do not guarantee it.
All information should be verified prior to purchase or lease.

For Further Information Contact Exclusive Broker:

Richard Goski
Vice President

908 295 5244
rgoski@naidb.com

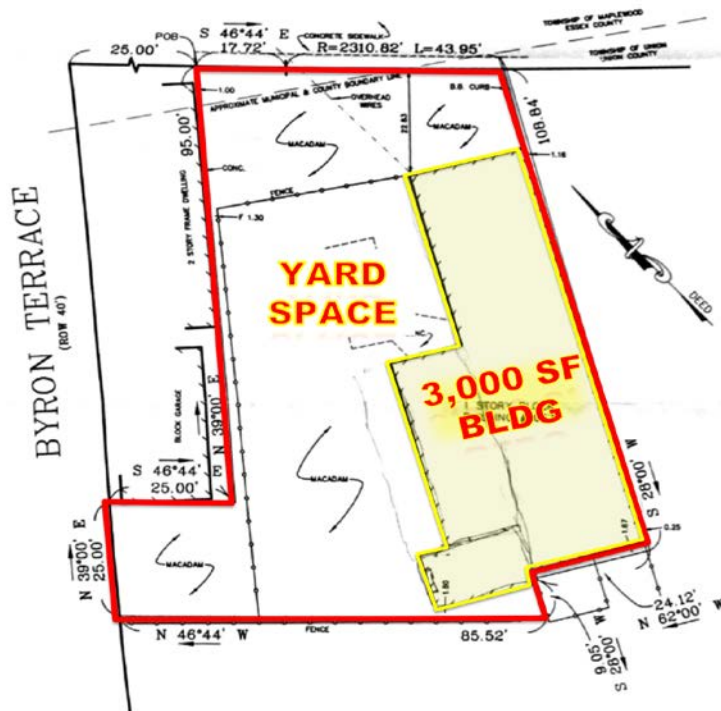
Catherine Goski
Associate

908 370 7074
cgoski@naidb.com

For Sale
2057 Millburn Avenue
Union, NJ



MILLBURN AVENUE
 (ROW 70')



AREA=9,145 SQ. FT.

Population	1 Mile	3 Mile	5 Mile
2017 Total Population:	22,783	194,135	579,079
2022 Population:	23,322	198,298	593,050
Pop Growth 2017-2022:	2.37%	2.14%	2.41%
Households			
2017 Total Households:	7,745	69,168	208,782
HH Growth 2017-2022:	2.29%	2.15%	2.41%
Median Household Inc:	\$92,894	\$71,484	\$55,126
Avg Household Size:	2.90	2.80	2.70

NAIDiLeo-Bram & Co.
 Commercial Real Estate Services, Worldwide.

1315 Stelton Road | Piscataway, NJ 08854
 732 985 3000 naidb.com

For Further Information Contact Exclusive Broker:

Richard Goski
 Vice President

908 295 5244
rgoski@naidb.com

Catherine Goski
 Associate

908 370 7074
cgoski@naidb.com