

For Sale
±2,100 Sq. Ft
Light Industrial Building



171 11th Street

Piscataway, New Jersey

Property Features

- ±2,100 sq. ft. free standing industrial building for sale
- Currently two separate units
- 2 drive-in doors
- 16 ft. ceiling height
- Fully paved lot provides ample parking
- Zoned LI1- Light Industrial
- City water and sewer
- 2020 Real Estate Taxes - \$4,565.76
- Conveniently located minutes from Exit 5 of Route 287, providing easy access to the Garden State Parkway and the New Jersey Turnpike



1315 Stelton Road
Piscataway, NJ 08854

732 985 3000 | naidb.com

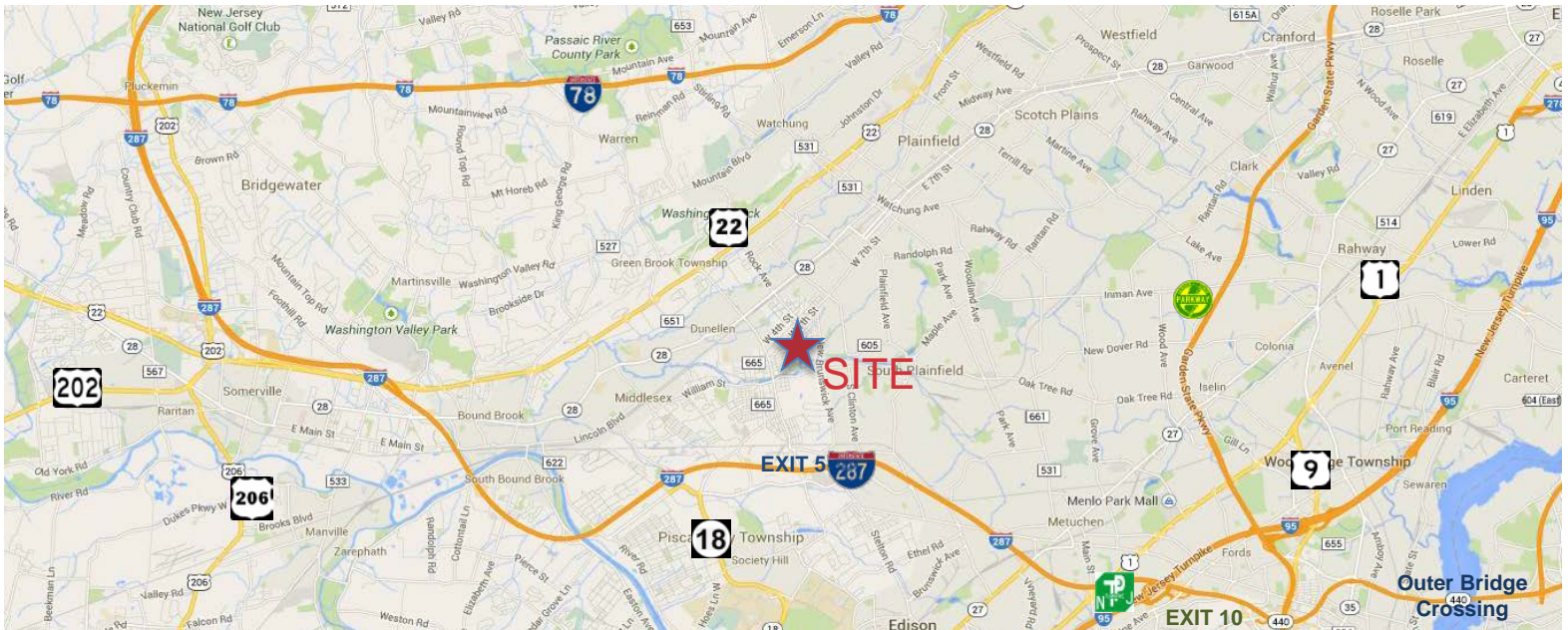
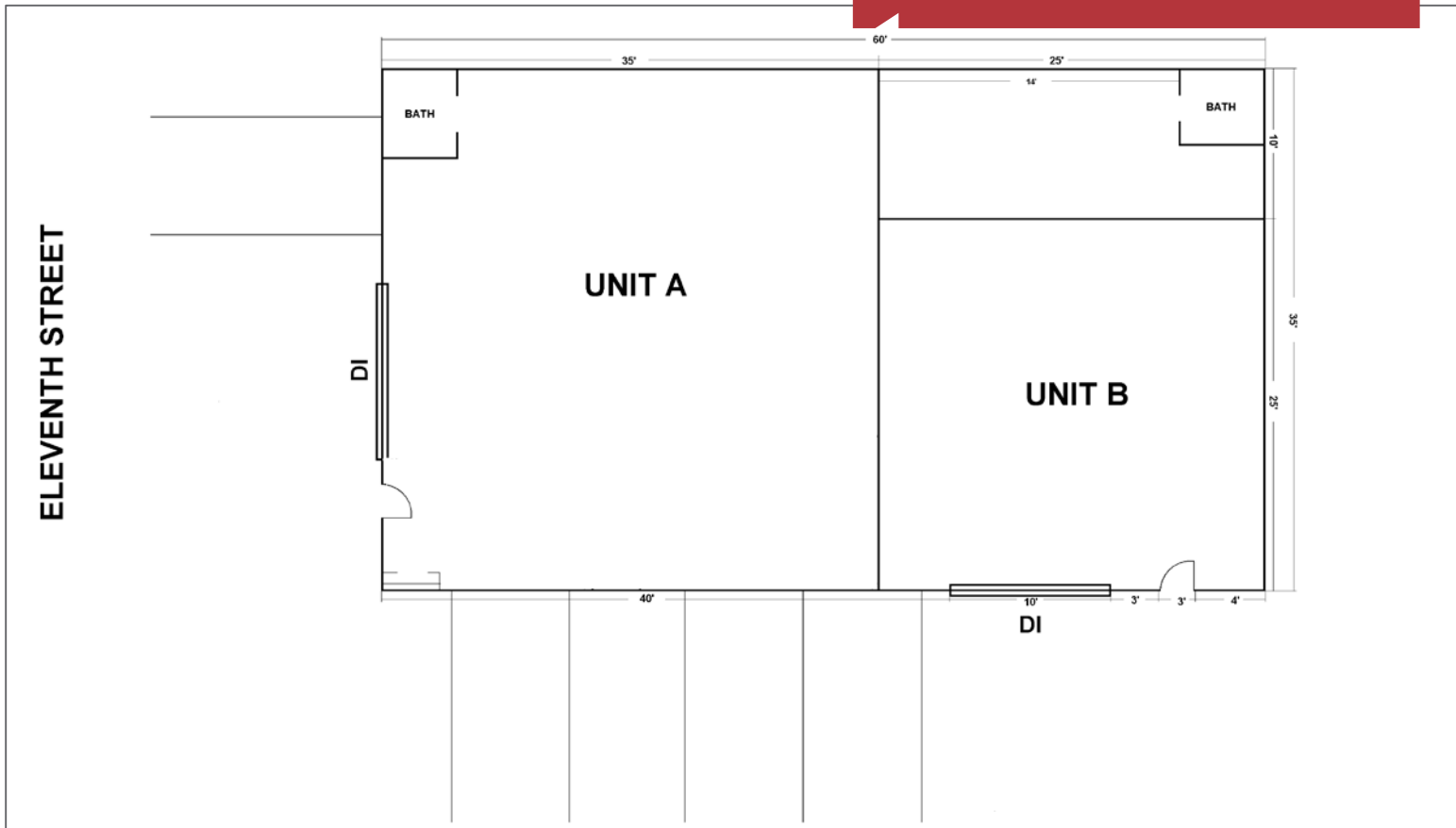
For Further Information Please Contact Exclusive Broker:

Daniel J. Duggan, Vice President

732 985 3000 ext. 225 | dduggan@naidb.com

Floor Plan

For Sale
2,100 Sq. Ft
Light Industrial Building



NAI DiLeo-Bram & Co.
 Commercial Real Estate Services, Worldwide.

1315 Stelton Road, Piscataway, NJ 08854
 732 985 3000 | naidb.com

For Further Information Please Contact Exclusive Broker:

Daniel J. Duggan, Vice President
 732 985 3000 ext. 225 | dduggan@naidb.com