

FOR LEASE

Class "A" Office Building



ABOUT THE LOCATION

- **Craig Corporate Center** is located just minutes from two area hospitals:
 - *CentraState Medical Center* -- 5 miles
 - *Raritan Bay Medical Center* -- 8 miles
- Only 2½ miles from Monmouth County Courthouse
- Neighboring area amenities including local shopping, hotels, restaurants and banking are all just minutes away.

The information contained herein has been given to us by the owner of the property or other sources we deem reliable. We have no reason to doubt its accuracy, but we do not guarantee it. All information should be verified prior to purchase or lease.

NAI DiLeo-Bram & Co.

Commercial Real Estate Services, Worldwide.

1315 Stelton Road
Piscataway, NJ 08854
732 985 3000 | naidb.com

For Further Information, Please Contact Exclusive Broker:

Marc L. Shein
Senior Vice President

732-985-3000 ext. 212
mshein@naidb.com

NAI DiLeo-Bram & Co.

Commercial Real Estate Services, Worldwide.

FOR LEASE

Class "A" Office Building



Craig Corporate Center

500 Craig Road, Manalapan, New Jersey

Property Features

- +/-39,000 sf two-story building plus Lower Level
- High quality finishes throughout
- Lower-level office space and storage space is also available
- Training and conference facility available
- Medical offices permitted
- Situated on 3+ acres with attractive landscaping and ample parking (4 spaces per 1,000 sq. ft.)
- Restaurants and shopping nearby
- Minutes from Routes 9, 18 and 33

AVAILABILITIES

UNIT SIZE	RENTAL RATE	POSSESSION
Lower Level		
±5,000 SF	TBD	Immediate
±3,000 SF	TBD	Immediate
First Floor		
±1,200 SF	TBD	Immediate
±3,000 SF	TBD	Immediate
±4,172 SF	TBD	Immediate
Ideal Social Distancing layout featuring private offices and private restrooms within suite		

For Further Information
Please Contact Exclusive Broker:

Marc L. Shein
Senior Vice President

732-985-3000 ext. 212
mshein@naidb.com

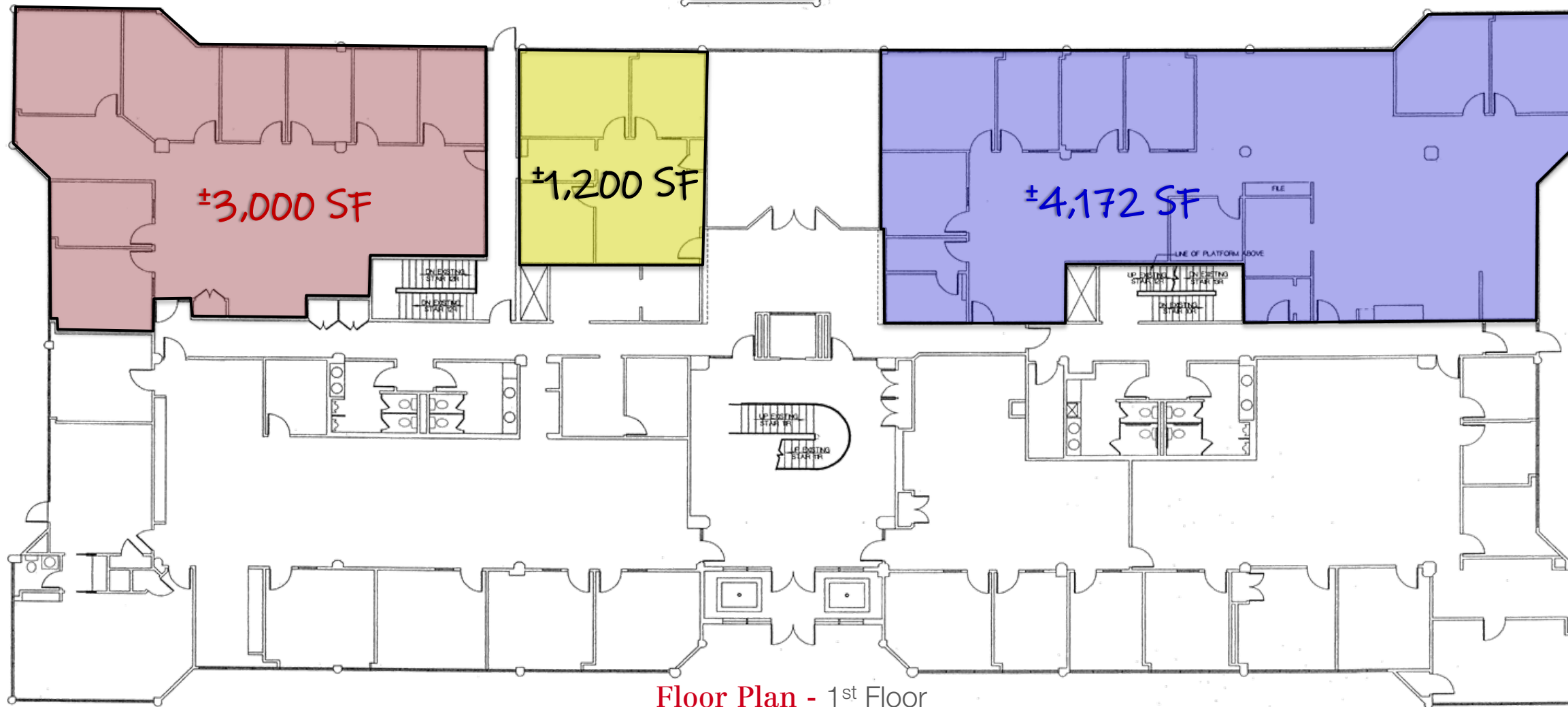
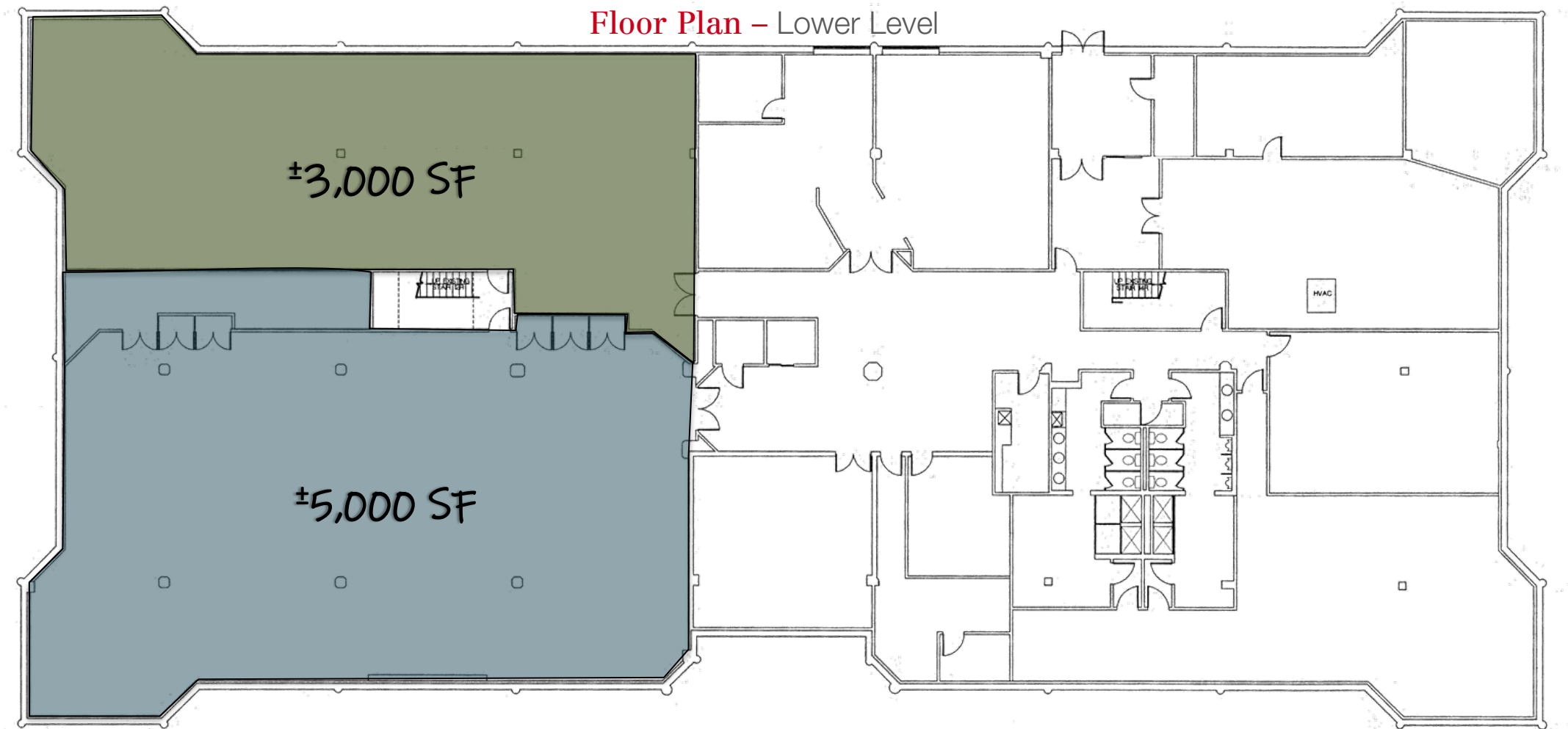
Recent building upgrades include new façade, new LED lighting throughout and new HVAC System

1315 Stelton Road
Piscataway, NJ 08854
732 985 3000 | naidb.com



Impressive lobby features include two story entryway, marble flooring, ornamental stairway and custom woodwork.

Floor Plan – Lower Level



Floor Plan - 1st Floor



Training/Conference Facility Available